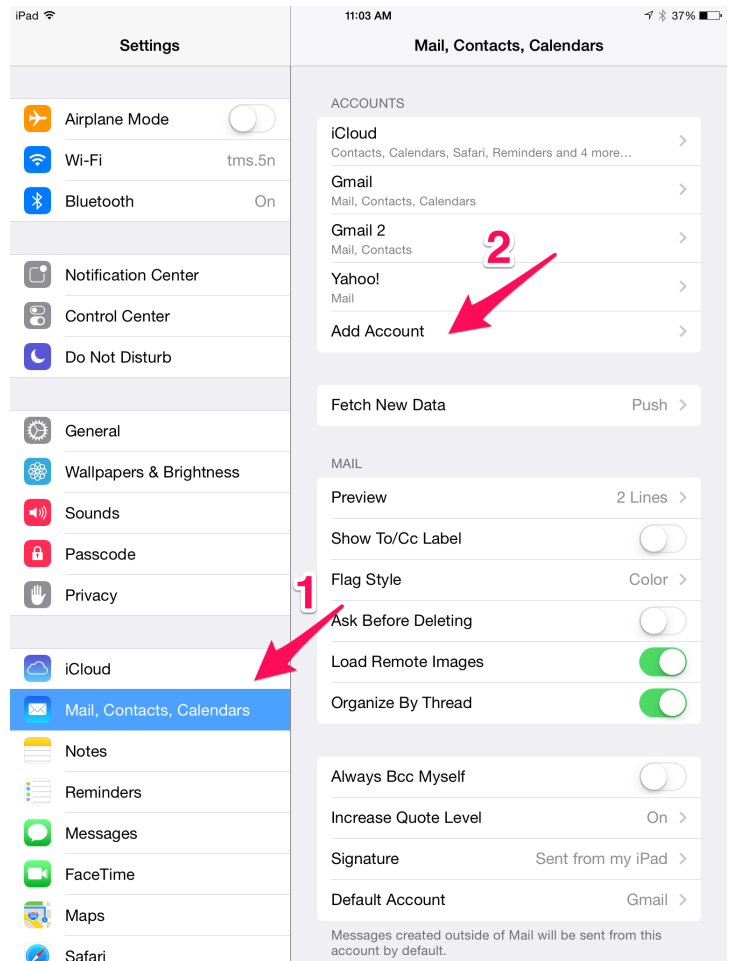
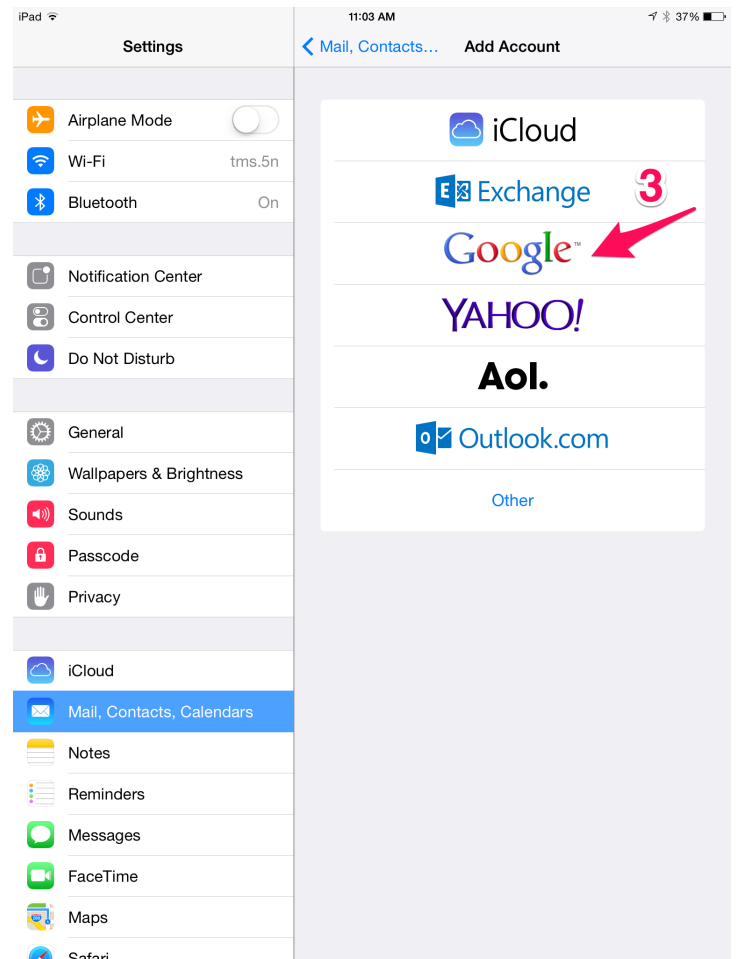


To add the @myfsd.org account to your iPad, click the **Settings** icon on your iPad and follow these simple directions.

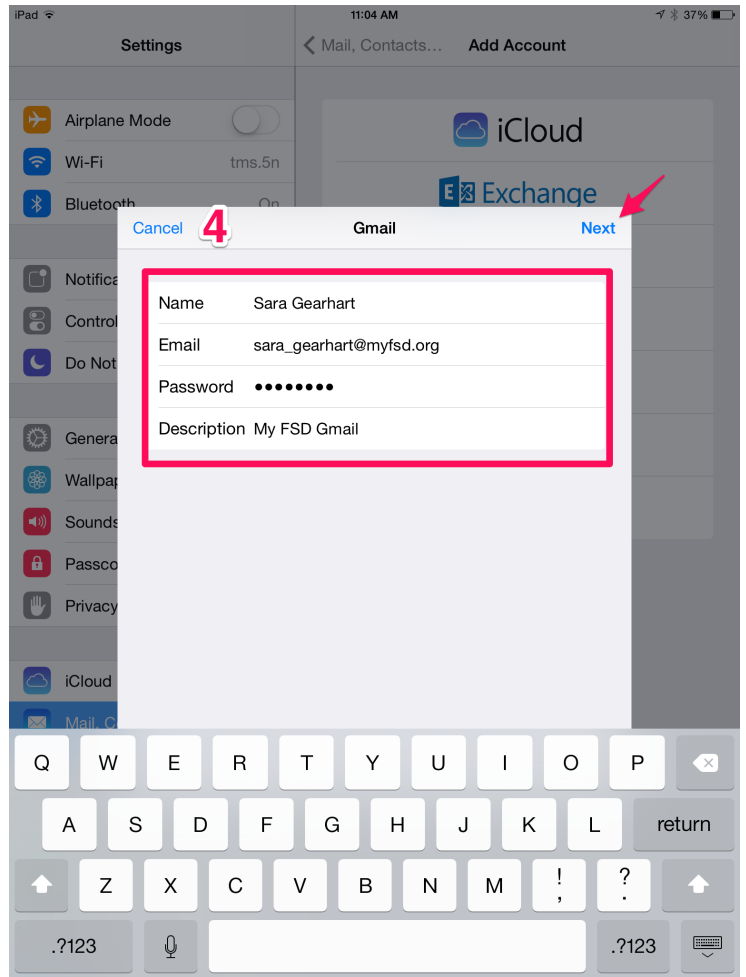
1. Click on **Mail, Contacts, Calendars**
2. Click **Add Account**



3. Click on **Google**



4. Enter your Name, MyFSD.org Google account email address and the MyFSD.org password and then change the Description to anything you'd like. I chose, My FSD Gmail. When you're done, click **Next**



5. On the next screen, click **Save**.
6. You're all done! Start checking your Mail from the Mail app icon.

